



Monroe Fire Department

Standard Operating Guidelines

Rapid Intervention Team Operations

Purpose: This document establishes guidelines for the Rapid Intervention Team (RIT). The City of Monroe Fire Department recognizes the intense physical and mental demands as well as the extreme risks of emergency responders and establishes this policy as a commitment to maintaining a professional response to aiding downed firefighters at the scene of incidents. These are essential for the short and long term well being of each member and necessary to effectively carry out the mission of the Department.

Level of Performance: All firefighters participating in training evolutions, or operating at an incident scene within the jurisdiction of the Monroe Fire Department, will actively participate in, and comply with the requirements of this policy.

Implementation: To better serve our constituents and mutual aid partners, the City of Monroe Fire Department will assign a Rapid Intervention Team to provide assistance to any responding firefighter who experiences difficulties in their response and become trapped, injured, or otherwise disabled during a structure fire or other response. RIT will also perform proactive fireground operations to increase the safety of firefighting crews engaged in operations.

RIT shall be assigned at the second alarm of a structure fire and any other incident in which the IC requires its establishment.

RIT shall include no less than four (4) firefighters whose sole purpose is to intervene in situations which place firefighters in harm's way, leading to their injury or death. There shall be one team leader, who reports directly to the Incident Commander, establishes a tool and equipment staging area for RIT use, directs proactive fireground safety operations and leads, as rapidly as possible, the response to aid downed firefighters.

Upon the activation of RIT, a second RIT will be moved into its place to respond to additional incidents or assist with the one in progress. This back up team will resupply the tools and equipment taken to the aid of the fallen firefighter and conduct itself in like manner as the first. In the event that the second RIT is deployed, a third shall be placed in service.

Due to the fact that the City of Monroe Fire Department will not normally be able to provide its own RIT to respond to a MAYDAY incident, the RIT will be requested through the Green County Communications Center at the second alarm or MABAS second box level dispatch for a structure fire from a mutual aid partner. Reciprocal responses to other departments will be made with those in agreement. Such agreements will be in writing or MABAS box cards maintained by both parties.

Qualified RIT Member: A Qualified RIT member is a firefighter who has completed department training based on the 2004 Board of Regents of the Oklahoma State University curriculum by Greg Jakubowski and Mike Morton, adapted for local use. The textbook used will be; Command Safety - The Brunacini Approach to Incident Command

A Qualified RIT member will complete or will have completed the following:

- Full understanding and demonstration of the ability to use personal protective equipment - Firefighter I Certification (Station 1a, b, c, and d);

- Department SCBA, its component parts and use
- Air Management, including their time limitations under working conditions
- Calling a MAYDAY
- Rapid Intervention Teams
- Self-survival techniques
- Rescue ropes and knots
- Extrication of downed firefighters
- Forced entry techniques

The Rapid Intervention Training Program will include:

- RIT Terminology
- The Need for Rapid Intervention Teams
- Sudden, Unexpected Events
- RIT Codes and Standards
- RIT Operational Concepts
- On-scene Preparation and Organization
- RIT Deployment.
- Interior Rescue Evolutions
- Exterior Rescue Evolutions
- Maximization of RIT Use
- Accountability

The above training components will include both classroom and practical evolutions

Classroom work will be conducted to provide knowledge and information to firefighters in formal education situations; and

Practical applications to verify and demonstrate the skill levels shall be conducted at a fire training facility, i.e. The MERIT Center in Monroe.

Verification of Training

- Qualified RIT members will demonstrate their readiness by
- Passing a written examination with a score of 70% or better
- Passing each of ten practical stations at the minimum standard level or above

Qualified RIT members will demonstrate currency in two ways:

- Attending department RIT training
- Performing RIT evolutions at a fire training facility, i.e. the MERIT Center in Monroe
- Outside RIT training through the Monroe Fire School or other training offerings

Trained RIT Member Requirements/Qualifications

- Members of the City of Monroe Fire Department to become RIT Qualified shall:
 - Be certified at least to the Wisconsin Firefighter I level;
 - Complete an application;
 - Agree to the terms, obligations, and responsibilities as described in this SOG;
 - Complete department RIT/MAYDAY training;
 - Complete a RIT Training course;
 - Complete satisfactorily the practical exam: and,
 - Pass the written examination with a grade of 70% or more.
 -

- RIT Training requirements will include, but not be limited to:
 - Attendance at all sessions of the RIT Qualified Course
 - Make-up of any session missed, at a mutual agreeable schedule for candidate and instructor
 - Participation in all department RIT course activities
 - Documentation of at least ten (10) hours of related RIT training per year

- Training maintenance will require the City of Monroe Firefighter to:
 - Document no less than ten (10) hours of RIT related training per year
 - Provide documentation of their air consumption rate
 - Attend any other such RIT training as required by the Department.

Organization

Establishment of a Rapid Intervention Team: With the arrival of additional personnel, a Rapid Intervention Team shall be established. This may be done by the automatic assignment of personnel per the mutual aid assignment as preplanned; it may be accomplished by the Incident Commander choosing no less than three individuals, nor more than five to assume the duties of the Rapid Intervention Team.

Arrival at the Scene: Upon arrival at the scene of an incident the first arriving individual in the passenger seat shall assume command of the incident. Upon the arrival of additional personnel, the ranking officer may choose to assume command; assign a third individual to assume command based on that individual's knowledge, skills, abilities, and experience; or allow the initial IC to continue. In the event that the initial IC is replaced, that individual will be assigned tasks by the new IC.

Duties of the IC during a MAYDAY: The Incident Commander should complete the following at the onset of a MAYDAY:

- Call for emergency radio traffic
- Assign all personnel except for the individual(s) calling a MAYDAY to a separate radio frequency
- Obtain a LUNAR report from the MAYDAY caller;
- Call for a PAR from all personnel beginning with those in the most dangerous positions
- Brief the RIT Team Leader and crew and deploy them to locate, extricate, and remove the MAYDAY caller(s)
- Assign a RIT Safety Officer (*if not already assigned*)
- Assign an Operations Section Chief (*if not already assigned*)
- Monitor all radio traffic, particularly maintaining contact with the RIT
- Assign a second (back-up) RIT
- Assure that the Communications Center is aware of the MAYDAY
- Call for additional MABAS Box Alarms as needed
- Upon removal of the MAYDAY caller(s), terminate the MAYDAY
- Assure that the Communications Center is aware of the MAYDAY
- Call for additional MABAS Box Alarms as needed
- Upon removal of the MAYDAY caller(s), terminate the MAYDAY

All RIT members will monitor fireground frequencies

Upon the activation of a MAYDAY, the Incident Commander, the downed firefighter, the RIT Leader and Members, and the RIT Safety Officer will remain on the original fireground frequency;

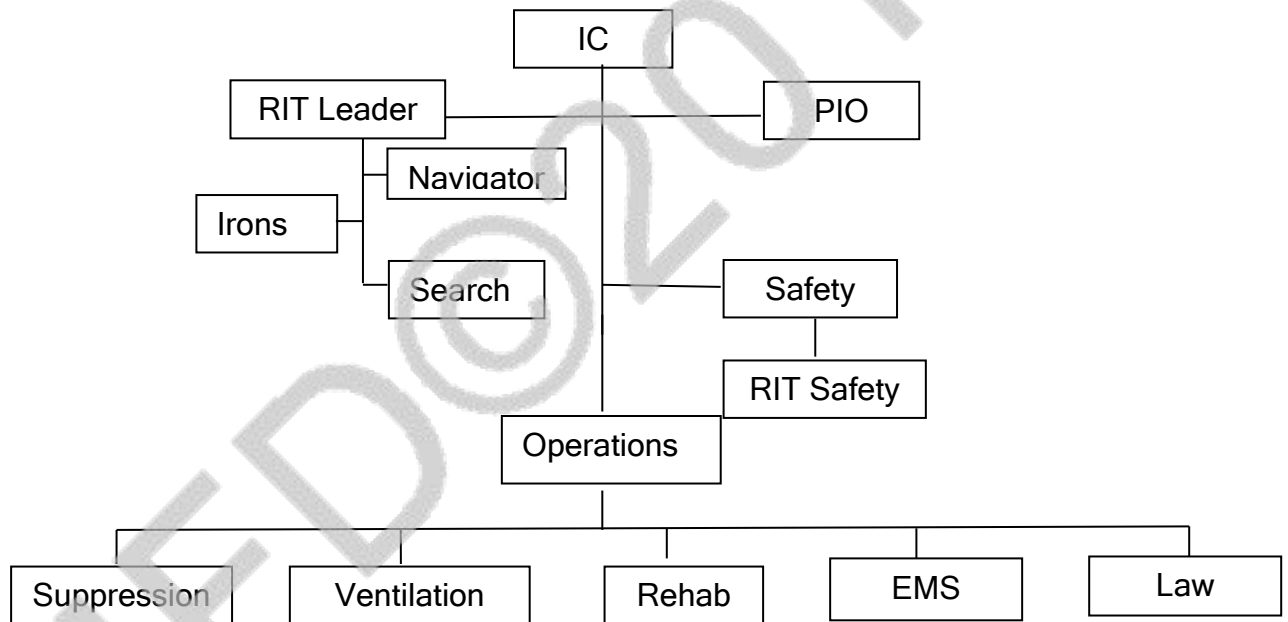
Fireground operations will be moved to a second fireground frequency for the duration of the operations;

The IC will monitor the original frequency and the secondary frequency, as well as maintaining contact with the Communications Center.

The IC may need to assign support personnel to assist in communications efforts.

This SOP provides suggestions and guidelines for the individual who has assumed command of an incident in which there is a need to provide rapid intervention in the event of a MAYDAY.

Chain of Command: The chain of command shall be as follows or similar:



Organization:

The Rapid Intervention Team shall consist of no less than four personnel, nor no more than six personnel. The minimum RIT members will be no less than the RIT Leader, RIT Navigator, RIT Irons, and a RIT Safety Officer should also be assigned to monitor the team’s safety:

- RIT Leader
- RIT Navigator
- RIT Irons
- RIT Search
- Search
- RIT Safety Officer

All RIT members shall be Qualified RIT Personnel.

RIT Leader: The RIT leader should be an experienced firefighter with RIT training.

The RIT Leader will perform the following functions prior to activation:

- Report to the IC and identify the team
- Create a rescue IAP based upon the events of the scene as well as any contingency IAPs in the event that the first becomes non-functional;
- Assure that an adequate amount of ladders have been placed to provide upper level secondary egress;
- Assure that there is adequate lighting so that the entire hazard zone is illuminated;
- Reviews and revises the ICs initial IAP;
- Remains in close contact with the IC in the event there is a need for activation; and,
- Supervises the RIT in its proactive fire scene preparation.

RIT Leader Equipment

- The RIT Leaders will have on their person:
 - Portable radio;
 - Box light; and
 - Thermal Imaging Camera (TIC)
- Additional equipment that will be carried by the RIT Leader are:
 - Rescue knife
 - 50' of personal rescue rope
 - 20' of rescue webbing
 - Sprinkler wedges/door chocks
 - Phillips/straight head screwdriver
 - Personal flashlight
 - Other personal rescue tools and equipment
- The RIT Leader Communicates with:
 - RIT members
 - IC
 - RIT Safety Officer
- Communications
 - Communications will be constant with the RIT; and,
 - Periodic with the IC and the RIT SO.

RIT Navigator: The first RIT member will have, as a minimum a portable radio, a box light, a 200 foot rescue rope, and the RIT Pack cylinder.

The Navigator will perform the following functions prior to MAYDAY activation:

- Assist in placing ladders for secondary egress and assist in providing adequate scene lighting;
- Assist with the creation of the IAP;
- Plan review and revision;
- Maintain constant awareness of firefighter locations inside the hazard zone; and,
- Other duties assigned by the RIT Leader

Upon activation of the RIT in a MAYDAY event the Navigator will:

- attach the rescue line to a fixed location outside the fire structure to serve as a guide for egress of the team and for ingress for a second team;

- enter the structure while playing out the rescue rope to provide awareness of the route into and out of the hazard zone;
- seeks the downed firefighter(s) with assistance of the additional team members;
- upon location of the downed firefighter(s) will notify the RIT Leader and the other members of the team;
- hand the tag line to the RIT Leader for securing and search the immediate area to assess hazards and look for a means of egress, or a safety location; and
- Assist in the assessment, extrication, packaging and removal of the downed firefighter(s).

RIT Navigator Equipment: The RIT Navigator will have on their person:

- Portable radio
- Box light

RIT Irons: The RIT Irons equipment will be, at a minimum:

- Portable radio
- Box light
- Set of Irons

Prior to a MAYDAY Activation, RIT Irons will perform the following functions:

- Assist in placing ladders for secondary egress
- Assist in providing adequate scene lighting
- Assist with the creation of the IAP
- Plan review and revision
- Other duties assigned by the RIT Leader

Upon activation of a MAYDAY:

- Assist in locating the downed firefighter(s)
- Alert the RIT Leader and the other members of the team upon location; and,
- Assist with the assessment, extrication, packaging and removal of the downed firefighter(s).

RIT Irons Equipment: The RIT Irons will have on their person:

- Portable radio
- Box light

RIT Search: RIT Searchers equipment will be, at a minimum:

- Portable radio
- Box light; and
- Pike pole/closet hook

Prior to MAYDAY activation, all RIT Searchers will perform the following functions:

- Assist in placing ladders for secondary egress
- Assist in providing adequate scene lighting
- Assist with the creation of the IAP
- Plan review and revision; and
- Other duties assigned by the RIT Leader

Upon activation of the RIT, the RIT searcher(s) will

- Initiate a search for the downed firefighter(s) by choosing a right hand or left hand search

- Search in a team of two
- Upon location of the downed firefighter(s), alert the RIT Leader and the other members of the team to the location
- Assist with the assessment, extrication, packaging and removal of the downed firefighter(s).

RIT Search Equipment: The RIT Search will have on their person:

- Portable radio
- Box light

RIT Safety Officer: Upon activation of the RIT for a MAYDAY event, the Incident Commanders shall appoint a RIT Safety Officer who will work under the auspices of the Incident Safety Officer.

The duties and responsibilities of the RIT Safety Officer are

- Determine the risk/benefit of attempting a MAYDAY rescue
- Verify the stability of the structure, particularly the hazard zone
- Assure the safety of the RIT and downed firefighter(s) throughout the duration of the MAYDAY rescue
- Coordinate with the RIT Leader and the IC

Rapid Intervention Team Safety Officer:

This guideline outlines the roles and responsibilities of the Rapid Intervention Safety Officer.

Organization:

Upon the activation of the incident Rapid Intervention Team, a RIT Safety Officer shall be appointed, either by the Incident Safety Officer or the Incident Commander. The sole responsibility of the RIT SO is to monitor the work of the RIT and the downed firefighter(s) during the search, extrication, treatment, packaging and removal of those calling the MAYDAY. Listed below are the roles and the responsibilities of the RIT Safety Officer:

Qualifications:

The RIT Safety Officer shall be a member who is familiar with the duties of an Incident Safety Officer, with adequate knowledge, skills, abilities, and experience to perform the task at hand. The RIT Safety Officer shall have completed two years of service with the department and NFA Incident Safety Officer training or an acceptable alternative course as determined by the Fire Chief

Duties: The RIT SO shall perform the following duties upon the calling of a MAYDAY

- Assure there are adequate egress options available to the RIT and others
- Direct communication with the RIT, the IC, and the ISO as required
- Direct observation of the RIT Leader, the Navigation guide, and the Search teams
- Ongoing assessment of the conditions at the scene of the MAYDAY
- Assistance in the review, and revision of the RIT IAP and the preparation of back-up RIT IAPs
- Continued reporting on the progress of the RIT
- Upon termination of the RIT, assuring the RIT personnel are properly evaluated for physical injuries and/or mental stress
- The preparation of a report on the RIT effort

- Following the termination of the incident, assurance that a debriefing is conducted as soon as possible for the RIT and the downed firefighter(s)

Implementation: This policy has been approved by the Officers of the Monroe Fire Department and the Monroe Common Council. This policy, and all adopted procedures, provide a guideline for operations within the Monroe Fire Department. Adoption of these guidelines in no way restricts the incident commander, department administration or the Monroe Common Council from modifying operations or implementing exceptions to policy in the interest of safety, efficiency and harmony within the organization. It shall remain in effect until withdrawn or modified by the department

Effective Date: December 2, 2014

MFD © 2014